



Caroline Chisholm School



Ambition Confidence Success
Everyone Every Lesson Every Opportunity



Welcome

I am immensely proud to welcome you to our oversubscribed and academically successful school.

We are a World Class High Performance Learning (HPL) accredited school which strives to develop young people into ambitious, high achieving, happy and resilient young adults. We make learning enjoyable from our Early Years' Foundation Stage right up to Key Stage 5. We provide a challenging academic curriculum, a supportive pastoral system and an outstanding extra-curricular programme which work together to grow and nurture the strengths and talents of all students.

This prospectus provides potential Sixth Form students and their parents with information about our Sixth Form provision. Applications are welcome from all Year 11 students, whether they are already at Caroline Chisholm School or currently attending other secondary schools.

We strive for excellence in all areas of learning and hold high expectations for our students, promoting an ethos of hard work, perseverance, and ambition, so anything is attainable. We recognise the wider importance to society of developing students who are good citizens and capable of achieving academically while being adaptable in an ever changing and competitive world.

This prospectus provides a taste of our offering in the sixth form at Caroline Chisholm School.

Please do not hesitate to ask for additional information from any member of the Sixth Form team or curriculum team.

Regards,

A handwritten signature in black ink, appearing to read 'D J' followed by a long horizontal stroke.

David James

Principal

Our Vision

Caroline Chisholm School is a safe, secure and inspirational learning environment at the heart of our community where everyone is equally valued and respected a community built on:

Ambition by developing the school culture, where everyone:

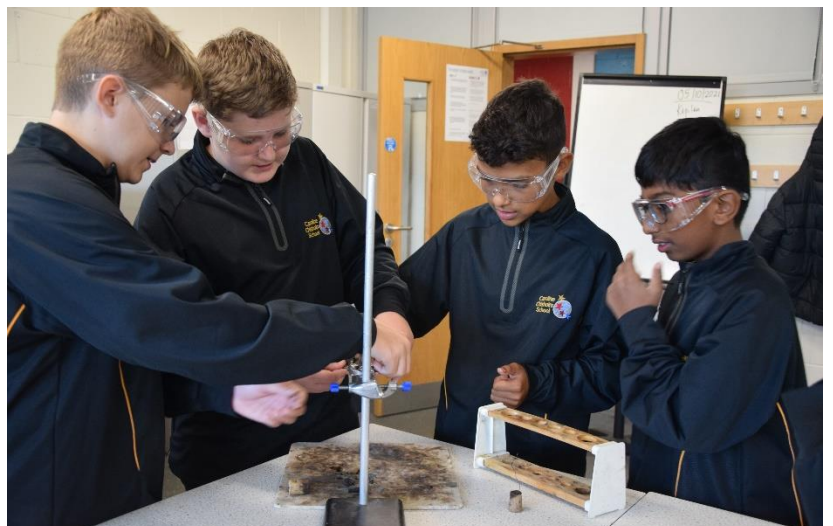
- strives to be the best they can become
- aspires to ambitious goals
- nurtures and supports

Confidence where everyone develops self-belief by:

- overcoming challenges
- taking calculated risks
- upholding our shared values

Success where everyone is inspired to:

- become a high performing learner
- embrace a range of rich and diverse opportunities
- celebrate achievement in all its forms



Sixth Form Ethos

We expect our sixth form students to be **high performing role models**, effective independent learners, and enthusiastic members of our school community.

We aim to encourage all students to develop a genuine interest and be fully engaged in their chosen subjects and provide the freedom for students to express themselves as young adults. We will support students to bridge the gap between school and university or employment, by developing independent study skills within a supportive and caring school environment.

We recognise the need to enable our students to move on to the world beyond school with **ambition, confidence** and **determination**, so they have a wide range of opportunities open to them and are **successful** in making the most of these opportunities.



Developing Ambition

Our Sixth Form encourages students to be ambitious when considering their career progression. We enable students to obtain fantastic academic qualifications so they can access the best universities and careers in the world, while making sure they are happy and confident to make the most of the next steps in their education and training.

Russell Group universities represent 24 of the UK's top higher education institutions which aim to promote excellent teaching and research. They are generally found at the top of the UK rankings for high value courses and have global reputations for excellence. **see appendix for full list of Russell Group Universities.* We also provide support for those individuals who wish to pursue higher or degree apprenticeships and have access to organisations such as ASK apprenticeships and "My Great First Job".

In 2021, over 32% of our leaver's cohort secured a place at the following Russell Group universities:

2021 Provider	Course(s)	2021 Provider	Course(s)
Cardiff University	Environmental Geography	University of Liverpool	International Business with a Year in Industry
	Law		Law
Durham University	English Literature	University of Manchester	Criminology
Queen Mary University of London	Economics and Politics		English Literature
	Engineering with Foundation		Law
University of Birmingham	Business Management (Year in Industry) (4 years)	University of Nottingham	American Studies and English
	Economics		Law
	Medicine (5 years)		Psychology
	Physics and Astrophysics	University of Sheffield	Geography
	Theoretical Physics and Applied Mathematics		Psychology
Pharmacy	University of Southampton	Electronic Engineering with Computer Systems	
University of Leeds	Mechanical Engineering	University of Warwick	Economics, Psychology and Philosophy (EPP)
	Social Policy and Sociology		Psychology
	Sport and Exercise Sciences	University of York	History

A Closer look at Sixth Form

Students who choose Caroline Chisholm School for their Sixth Form education benefit from academic excellence delivered through exceptional teaching and learning. Our Sixth Form team and tutors support the academic and social progress of students and to prepare them for life after school. All students are advised and guided through the relevant application process, whether for a university course or a higher degree apprenticeship.

Our students are expected to take on responsibilities not only towards their own education, but also within the wider community. Academic qualifications will open doors to future opportunities, but we are mindful that it is also our responsibility to equip students for the future through informed decisions that will impact positively on their well-being, independence and longer-term success.

We will help them to build resilience and transferable life skills, which enable them to contribute purposefully to society. All of our students are expected to volunteer and participate in the **Enrichment Programme** and should aim to achieve the **100 hours Lions Award**.

Pastoral care is at the heart of our Sixth Form. We believe that developing a growth mindset approach promotes well-being. We have several services available to support learning including the following:

- Dedicated form tutors – offering consistency and a regular point of contact
- Subject leaders – providing guidance and support in all areas of learning
- School counsellors – offering tailored, individual support when required
- Mentoring scheme – allowing students to mentor younger students, assisting in confidence and leadership skills
- Dedicated sixth form area – a large area solely for sixth form use allowing individual, silent study
- Sixth form café – a communal, social area allowing interaction in a relaxed area exclusively for sixth form use
- Individual lockers – secure charging point for personal devices
- **Sixth Form Student Council** - led by the head and deputy head students which play a central part in forming a successful partnership with teaching and administrative staff



“ Aside from the core studies, the Sixth Form has a lot to offer in terms of facilities and other enrichment opportunities which are very useful. We feel well prepared for when we go off to higher education! ” - Sixth Form student

Our Offer

Our curriculum is designed to ensure that students can move effectively into their chosen next phase of education or employment. Option blocks allow for common combinations of subjects to be taken which maximise the opportunity for students to move onto their university, degree or apprenticeship of choice. Our students typically study three A level subjects (Pathway 1). In exceptional cases, students will be able to study a fourth A level subject. There is also an opportunity for students to take a Diploma course, equivalent to 2 A Levels, plus one additional A Level subject (Pathway 2).

Students who meet the Pathway entry requirements will also be able to supplement their studies by undertaking an Extended Project Qualification (EPQ) during their time in sixth form, which contributes towards their final UCAS points. We advise that students wishing to apply for top-level universities to consider “high value subjects” and common combinations of subjects as demonstrated in the CCS Option blocks 2022.



Sixth Form Options Blocks 2022

Students must select three options. Only one option can be selected from each block (A-E).

Pathway 1 students can choose any combination of three A level subjects; however, combination guidance should be referred to below.

Pathway 2 students must choose either the Business Diploma or Health and Social Care Diploma; plus one A level subject from blocks B-D.

	Option Block A	Option Block B	Option Block C	Option Block D	Option Block E
Core Sciences*	Biology	Chemistry	Physics	Maths	Further Maths
	Computer Science	Maths		Biology	
Core Arts**	History	Spanish	French	English Literature	Geography
		Geography	German		
Social Sciences and Business***	Law	Philosophy	Economics	Business Studies	Politics
	Psychology	Business Studies	Law	Psychology	Law
			Sociology		Sociology
					Psychology
Creative Arts and PE****		Theatre Studies	Product Design	PE	Film Studies
		Photography	Art	Music	
Pathway 2 Diplomas*****	Business Diploma				Business Diploma
	Health and Social Care Diploma				Health and Social Care Diploma

***Core Sciences:** High value subjects, with high earning potential. Students wanting to pursue the strongest pathways for Medicine, Dentistry, Veterinary Science, Natural Sciences, Physical Sciences, Mathematics, Engineering, and Computer Science should pick three subjects from this set. Further Mathematics is encouraged particularly as a fourth A Level for our most ambitious students.

****Core Arts:** Traditional facilitating Arts subjects, highly regarded by all top universities. Students wanting to pursue the strongest pathways in Arts and Social Sciences are encouraged to select at least one subject from this set. These subjects are best taken in combination with the Social Science options: for example: History, English Literature and Government and Politics; English Literature, Spanish and Psychology. Geography is classed as a Science by some universities so can also complement a Science pathway.

*****Social Sciences and Business:** All combinations in this set work well together and will complement Core Arts subjects. Psychology is typically classed as a Science by universities so can also complement a Science pathway. Economics and Business Studies work very well with Mathematics for numerically-focused Social Science pathway. Students wanting to study Law at university may wish to take Law A Level, though it should be noted that this is not prerequisite for a university Law application.

******Creative Arts and PE:** These subjects can work well with in combination with Core Arts and Social Science subjects. PE can complement a Science pathway, such as Physiotherapy and Paramedic Science; it also works well with Psychology leading to popular degrees such as Sports Psychology. Theatre Studies is commonly taken alongside English Literature. Product Design works well with Mathematics and Business Studies. Most students will take no more than one Creative Arts subject as the coursework components for these subjects is substantial.

*******Pathway 2 Diplomas:** Diplomas are alternative equivalents to two A levels, and so a Diploma takes up two options blocks. This means a Diploma is taken alongside one A level subject from blocks B-D.

Applying for a Place

- **Existing Caroline Chisholm School students** should make their application from via the school's options portal (login details for which will be provided) by following the appropriate link on our website.
- **External students** should apply by completing the online application form which can be accessed by following the appropriate link on our website.

Applications will open from 20 January 2022 at 9am. The deadline for applications is midnight on Tuesday 8 February 2022. Any applications received after this time will be considered, but only if there are places available both in the sixth form and on the relevant course. The published admission number (PAN) for external applications is 50.

Detailed admissions criteria and the subject course guide are available on the school website. Appeals information is also available on the school website.

All initial offers of places to internal and external students are conditional and are only confirmed on results day, when the student shows evidence of achieving the required grades for their chosen subjects (August 2022).

Availability of courses are dependent on number of applicants and viability of running them. For this reason, we ask students to also select a **reserve subject**. If there is a change to their chosen subjects,

Entry Requirements

Students wishing to attend CCS Sixth Form can follow one of two pathways:

Pathway 1: Students may choose to study three A levels from our complete range of subjects. We require that students have achieved all of the following:

- A minimum GCSE grade 5 (or equivalent) in at least five subjects; and
- A minimum of grade 5 in one of their English subjects and a minimum of grade 4 in the other; and
- A minimum of grade 4 in Maths.

Pathway 2: Students may choose to study a Diploma (equivalent to two A Levels) in either Business or Health and Social Care and choose one other A level from a range. We require that students have achieved all of the following:

- A minimum GCSE grade 4 (or equivalent) in at least five subjects; and
- A minimum of grade 4 in both English Literature and Language; and
- A minimum of grade 4 in Maths;

As well as the entry criteria, students should also consider the individual subject recommendations (sixth form course guide) before finalising choices.



Sixth Form Life

Our students enjoy a mixture of timetabled lessons, independent study sessions, enrichment and voluntary work and also have time to relax should they require it.

Whilst we expect students to work hard, it is also important that they manage their time in order to mix with friends and enjoy the social benefits of life in this vital stage of their school journey. Students have a unique study centre, monitored supported by a dedicated pastoral team. There are a number of 'break-out' rooms available to them. Students are encouraged to bring their own laptops into school.

Teaching and Learning

We encourage students to be active learners, conduct their own research, organise their own time and take a leading role in lessons. Every student is part of a tutor group which meets regularly. Tutors also meet with students on an individual basis to monitor progress, help them develop study skills and discuss any concerns.

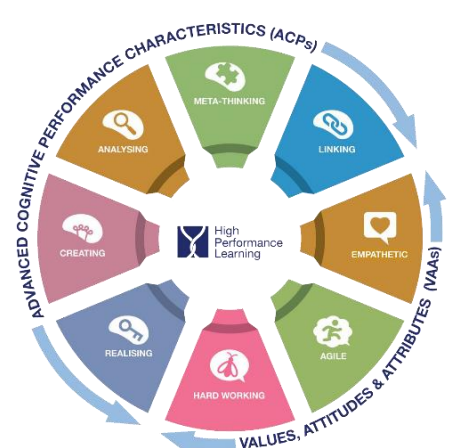
Our extensive range of educational trips, pre-covid, enhance and bring to life students' learning experience in the classroom. Trips to date have included: Iceland, Venice, Florence, Uganda, Malawi, Pembrokeshire and CERN, Switzerland. We are very hopeful that these opportunities will resume in the near future.

High Performance Learning

At Caroline Chisholm School we adopt a High Performance Learning (HPL) approach throughout the entire school experience – in lessons, extra-curricular activities, form time and in home study tasks. HPL is a research-based, pedagogy-led philosophy developed by Professor Deborah Eyre. This approach sees all students as high performers who are not limited by ability, and this reflects our own ethos of "everyone, every lesson, every opportunity".

HPL makes the ambition of high performance the expectation for all students in the school and uses a teaching and learning framework to systematically grow minds and develop the cognitive skills, values, attitudes and attributes needed to reach success. Our students are encouraged to use their thinking skills to build on existing knowledge, generate their own ideas and opinions and to solve problems effectively, both individually and in collaboration with their peers.

We have made connections with schools across the globe and have been accredited as a **World Class School**. A school where students gain the thinking skills and learning behaviours to equip them with the knowledge and independence to be global citizens, enterprising learners and advanced performers.



The Enrichment Programme

We are proud to offer diverse experiences which develop a range of transferable skills applicable to life beyond the Sixth Form:

- Participation in the Student Council
- A flexible timetable to allow for regular, relevant work experience
- Voluntary work through involvement in local community projects towards the YLIS award
- Supporting younger students in both primary and secondary phases
- Improving the school environment
- Undertaking the NCS Award
- Undertaking the Sports Leaders Level 2 Award
- PSHE programme delivered through tutor sessions and from visiting speakers
- Visits, including university open days and career fairs
- Educational trips



Induction

Induction into the Sixth Form for prospective students takes place late June/ early July, shortly after following the completion of students' GCSE examinations. Induction is an opportunity for our new students to experience sample lessons and try out a range of A level subjects that will be studied when they start in September.

External students are offered an extended induction programme to give them the opportunity to gain an insight into life at our school and familiarise themselves with the school environment before they start.



Dress Code

We expect students to dress appropriately for the modern workplace and follow the published Sixth Form dress code. The Sixth Form team and tutors will intervene where dress falls below our expectations. There are some items which we consider inappropriate for school context, including:

- Blue/ grey/ very faded denim
- Excessively revealing clothes (open neck/ backed, short, cropped, see-through material)
- Ripped/ split and camouflage items
- Excessively high shoes
- Flip flops/ sliders
- Visible facial piercings
- Track bottoms, sports branded clothes and gym attire/shorts
- Visible tattoos
- Items with offensive/ provocative slogans/ adult-themed images/logos

“ In the Sixth Form, [...] the advice and guidance provided to support students' next steps are effective. Leaders provide many opportunities to develop students' character. ”

- Ofsted report, 2020

16-19 Bursary

The **16-19 Bursary Fund** helps students continue in education where they may otherwise struggle for financial reasons. We target funds allocated by the Educational Funding Agency to support these students. Completion and submission of the school's 16-19 Bursary Application Form, available via the school website, will be required.



Facilities

Our school has state-of-the-art classrooms, laboratories and specialist-teaching facilities, including dedicated dance, drama and music, science and technology and visual arts rooms. Our students benefit from their own, silent study area, break-out rooms for small group work and a café area, which provides hot snacks, drinks and other refreshments during the school day. Every Sixth Form student will also have access to their own individual small locker, which can store a portable device such as a laptop and/or mobile phone. The lockers are also equipped with an individual charging point for students to utilise for their device(s).

“ Pupils are well supported for their next steps in education and training. Opportunities for extra-curricular activity are highly regarded. These include a wide range of sports, dance, drama and visual arts. ”

- Ofsted report, 2020

Appendix

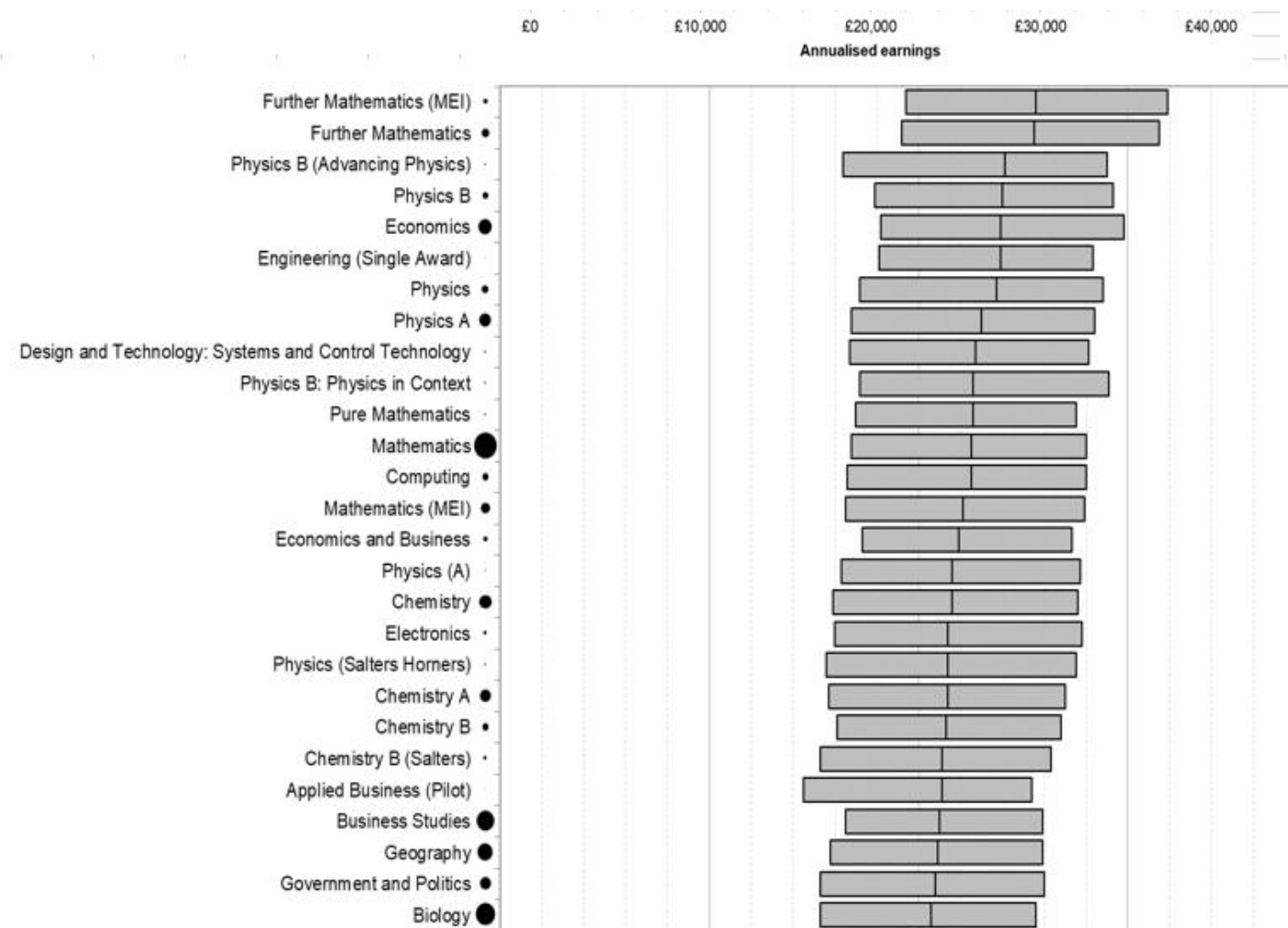
"Russell Group" universities represent 24 of the UK's top higher education institutions which aim to promote excellent teaching and research.

They are generally found at the top of the UK rankings for high value courses, and have global reputations for excellence.

Russell Group Universities in Alphabetical Order
University of Birmingham
University of Bristol
University of Cambridge
Cardiff University
Durham University
University of Edinburgh
University of Exeter
University of Glasgow
Imperial College London
King's College London
University of Leeds
University of Liverpool
London School of Economics
University of Manchester
Newcastle University
University of Nottingham
University of Oxford
Queen Mary University of London
Queen's University Belfast
University of Sheffield
University of Southampton
University College London
University of Warwick
University of York

Choosing your subjects

Consideration of "High Value Courses" are subjects identified by the government as A levels which lead to higher earnings within 6 years (using data on earnings outcomes).





The Wooldale Centre for Learning, Wootton Fields,
Northampton, NN4 6TP

01604 344744 | www.ccs.northants.sch.uk

Principal: Mr David James

Vice Principals: Mr Andrew Fisher, Mrs Katherine Patterson,
Mr Gary Wakefield

 @CarolineChisholmSchool |  @CCS_UK